



## FAQ / Application Note

**Subject :** How to restore Android 8.1

**FAQ Document No:**

**Date:** 2020/10/19

**Model Name:** Generic

**Rev.** A2

**Category:** ☐ General ☐ H/W ☒ S/W ☐ Others, Android

**Purpose:**

How to use an USB key to recover Android 8.1 OS for Avalue panel PC

### Environment:

- System Model:
- BIOS version:
- Software Tool: Universal USB Installer ([Download](#))
- USB Stick: 2GB or larger USB key
- Android 8.1 image file: 8.1-r5-rc7\_userdebug\_android\_x86\_64  
(Please contact Avalue AE to get the image if necessary)

The recovery process includes two actions:

- (1) To create an Android-x64 USB installer
- (2) Install Android-x64 with USB installer

### Avalue Technology Inc.

7F, 228, Lian-Cheng Road, Chung Ho City, Taipei, Taiwan R.O.C.

www.avalue.com.tw  
sales@avalue.com.tw  
Tel: +886-2-82262345  
Fax: +886-2-82262777

Avalue Europe  
sales.europe@avalue.com.tw  
Tel: +45-7025-0310  
Fax: +45-4975-5026

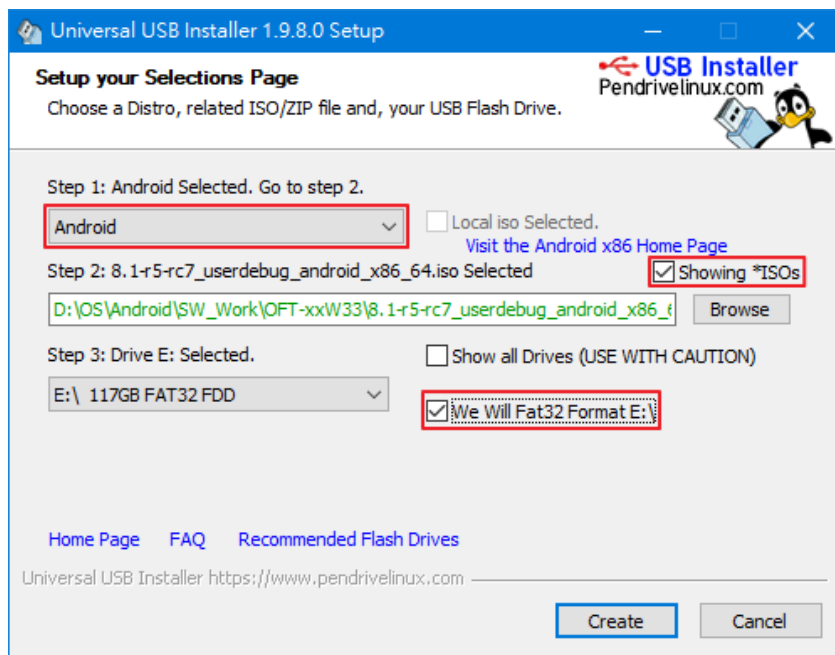
Avalue USA  
sales@avalue-usa.com  
Tel: +1-732-578-0200  
Fax: +1-732-578-0250

BCM Advanced Research  
BCMSales@bcmcom.com  
Tel: +1-949-470-1888  
Fax: +1-949-470-0971

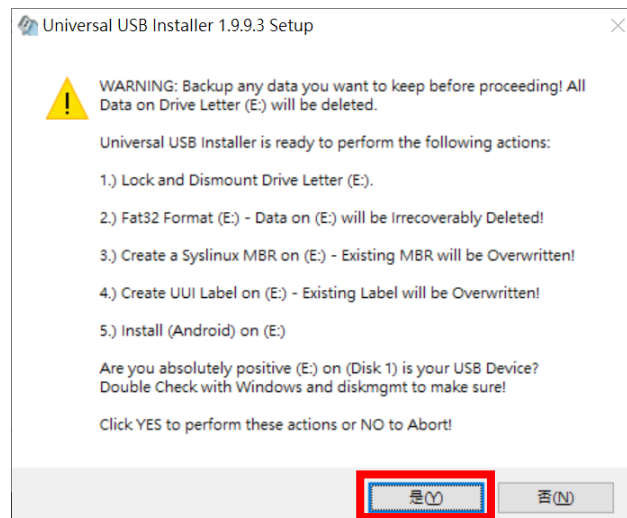
Avalue China  
sales.china@avalue.com.cn  
Tel: +86-21-5426-3399  
Fax: +86-21-6495-0370

## (1) To create Android-x86 USB installer

1. Plug-In your USB disk into you PC and Run Universal USB Installer setup program.
2. Follow the step to select the setting as below:
  - Step 1: Android
  - Step 2: Mark [Show All ISOs?] then click [Browse] to select the image .iso file
  - Step 3: Select the correct Drive (USB disk) and tick the “Fat32 Format Drive”



3. Click <Create> to start the USB Installer setup process, the program will pop up a warning message, click <Yes> to continue the process.



### Avalue Technology Inc.

www.avalue.com.tw  
sales@avalue.com.tw  
Tel: +886-2-82262345  
Fax: +886-2-82262777

Avalue Europe  
sales.europe@avalue.com.tw  
Tel: +45-7025-0310  
Fax: +45-4975-5026

Avalue USA  
sales@avalue-usa.com  
Tel: +1-732-578-0200  
Fax: +1-732-578-0250

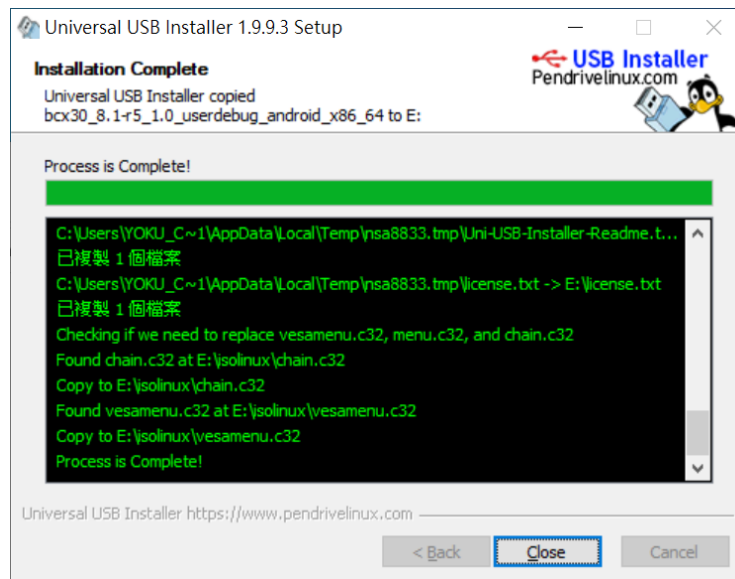
BCM Advanced Research  
BCMSales@bcmcom.com  
Tel: +1-949-470-1888  
Fax: +1-949-470-0971

Avalue China  
sales.china@avalue.com.cn  
Tel: +86-21-5426-3399  
Fax: +86-21-6495-0370

7F, 228, Lian-Cheng Road, Chung Ho City, Taipei, Taiwan R.O.C.



4. After the process is completed, click <Close> to close this process.



5. When your system boot from this USB disk, it will start the Android-x86 install process automatic.

#### Avalue Technology Inc.

www.avalue.com.tw  
sales@avalue.com.tw  
Tel: +886-2-82262345  
Fax: +886-2-82262777

Avalue Europe  
sales.europe@avalue.com.tw  
Tel: +45-7025-0310  
Fax: +45-4975-5026

Avalue USA  
sales@avalue-usa.com  
Tel: +1-732-578-0200  
Fax: +1-732-578-0250

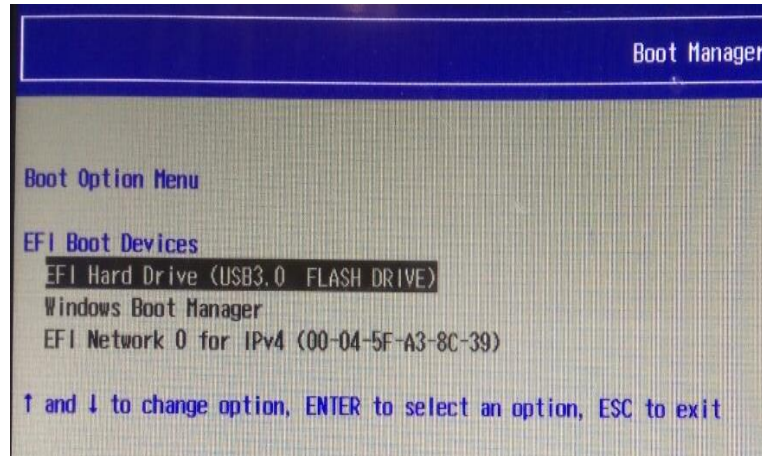
BCM Advanced Research  
BCMSales@bcmcom.com  
Tel: +1-949-470-1888  
Fax: +1-949-470-0971

Avalue China  
sales.china@avalue.com.cn  
Tel: +86-21-5426-3399  
Fax: +86-21-6495-0370

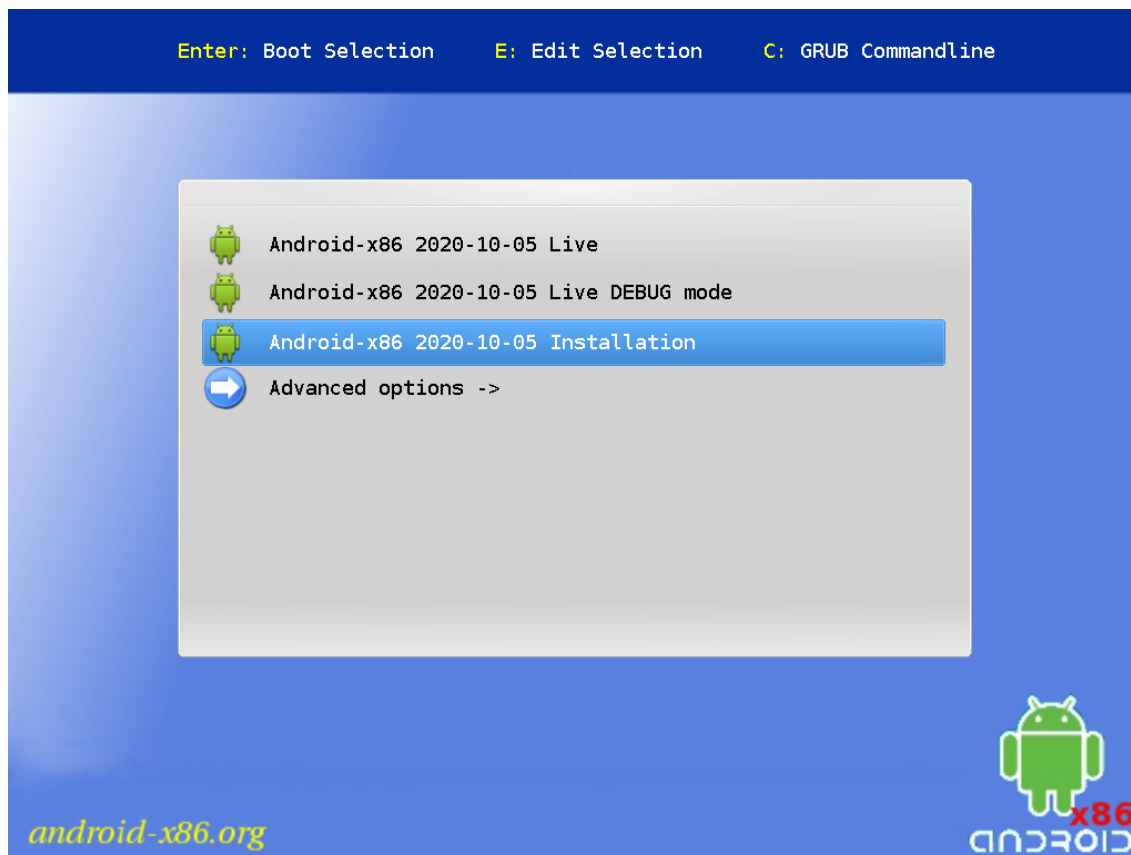
7F, 228, Lian-Cheng Road, Chung Ho City, Taipei, Taiwan R.O.C.

## (2) Deploy Android-x86 with an USB installer

1. Plug the USB key Android image to your target device, then boot up your target device with pressing F11 or F12 on the keyboard at BIOS POST screen, to choose boot from the USB key.



2. Select Installation item.



### Avalue Technology Inc.

www.avalue.com.tw  
sales@avalue.com.tw  
Tel: +886-2-82262345  
Fax: +886-2-82262777

Avalue Europe  
sales.europe@avalue.com.tw  
Tel: +45-7025-0310  
Fax: +45-4975-5026

Avalue USA  
sales@avalue-usa.com  
Tel: +1-732-578-0200  
Fax: +1-732-578-0250

BCM Advanced Research  
BCMSales@bcmcom.com  
Tel: +1-949-470-1888  
Fax: +1-949-470-0971

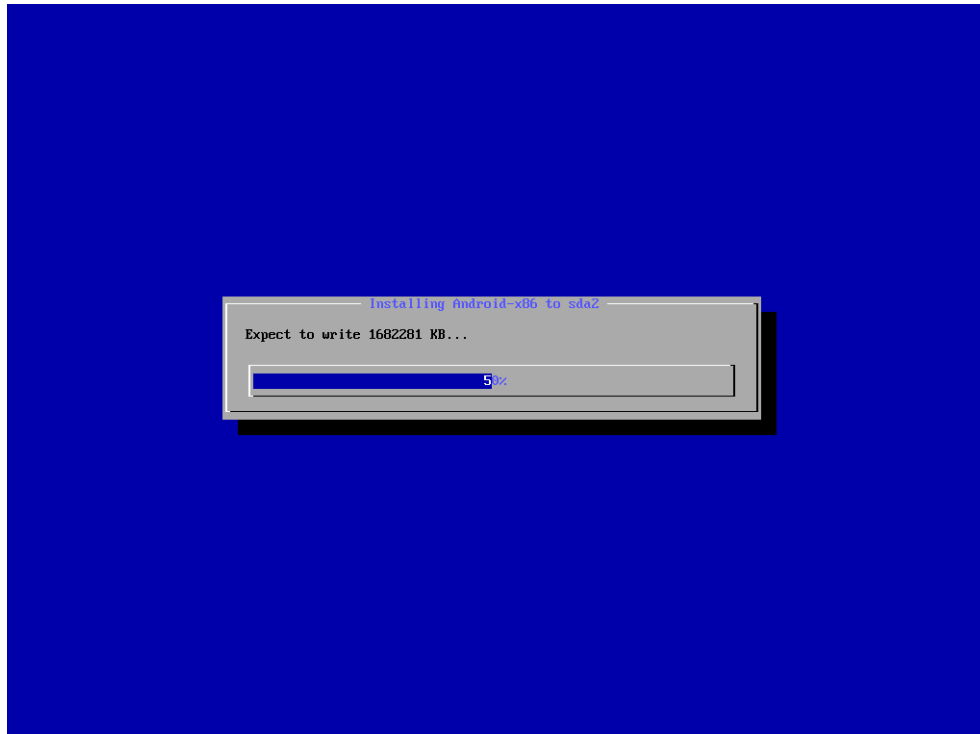
Avalue China  
sales.china@avalue.com.cn  
Tel: +86-21-5426-3399  
Fax: +86-21-6495-0370

7F, 228, Lian-Cheng Road, Chung Ho City, Taipei, Taiwan R.O.C.

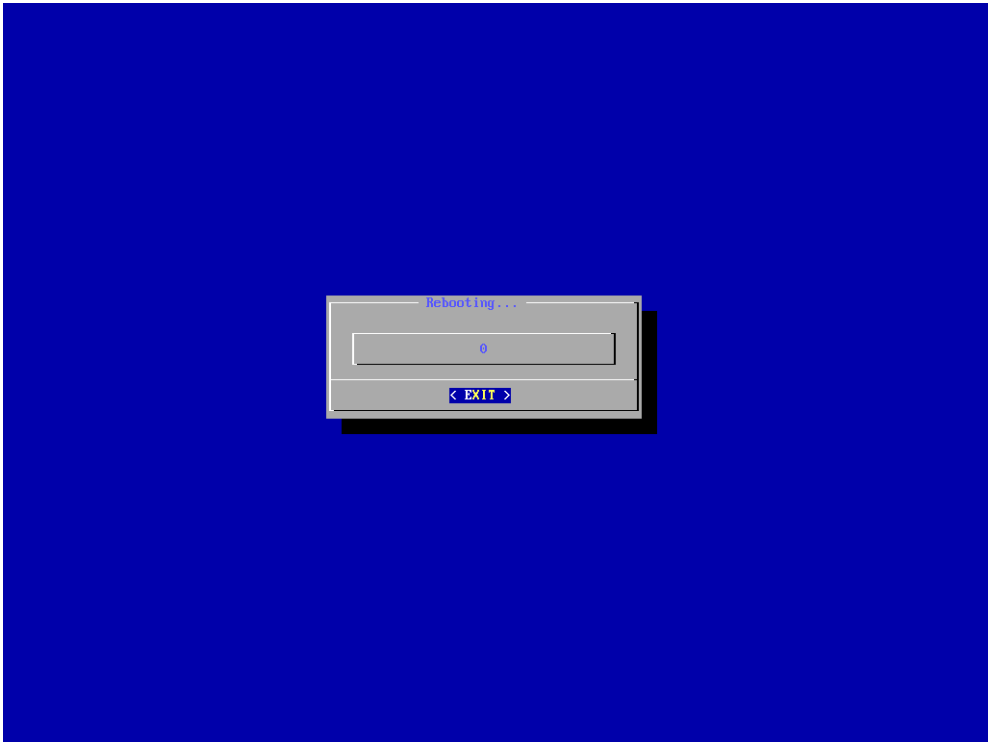


### 3. Start image recovering process

```
[ 2.131180] usbcore: registered new interface driver ums-cypress
[ 2.161180] usbcore: registered new interface driver ums-cypress
[ 2.161945] usbcore: registered new interface driver ums-datafab
[ 2.190530] usbcore: registered new interface driver ums_eneub6250
[ 2.221130] usbcore: registered new interface driver ums-freecom
[ 2.249991] usbcore: registered new interface driver ums-isd200
[ 2.284069] usbcore: registered new interface driver ums-jumpshot
[ 2.315121] usbcore: registered new interface driver ums-onetouch
[ 2.344535] usbcore: registered new interface driver ums-realttek
[ 2.374230] usbcore: registered new interface driver ums-sddr09
[ 2.402666] usbcore: registered new interface driver ums-sddr55
[ 2.434727] usbcore: registered new interface driver ums-usbata
[ 2.462283] i8042: PNP: PS/2 Controller [PNP0303:PS2K,PNP0F03:PS2M] at 0x60,0x64 irq 1,12
[ 2.492769] serio: i8042 KBD port at 0x60,0x64 irq 1
[ 2.521902] serio: i8042 AUX port at 0x60,0x64 irq 12
[ 2.549528] usb 1-1: new full-speed USB device number 2 using ohci-pci
[ 2.577734] hv_umbus: registering driver hyperv_keyboard
[ 2.607719] mousedev: PS/2 mouse device common for all mice
[ 2.637700] rtc_cmos rtc_cmos: registered as rtc0
[ 2.665486] rtc_cmos rtc_cmos: setting system clock to 2020-10-19 11:45:23 UTC (1603107923)
[ 2.695622] rtc_cmos rtc_cmos: alarms up to one day, 114 bytes nvram
[ 2.723288] IR Sharp protocol handler initialized
[ 2.751517] IR XMP protocol handler initialized
[ 2.781126] device-mapper: uevent: version 1.0.3
[ 2.808691] device-mapper: ioctl: 4.39.0-ioctl (2018-04-03) initialised: dm-devel@redhat.com
[ 2.836986] sdhci: Secure Digital Host Controller Interface driver
[ 2.865735] sdhci: Copyright(c) Pierre Ossman
[ 2.893669] sdhci-pltfm: SDHCI platform and OF driver helper
[ 2.920986] hidraw: raw HID events driver (C) Jiri Kosina
[ 2.950546] usbcore: registered new interface driver usbhid
[ 2.978291] usbhid: USB HID core driver
[ 3.005579] ashmem: initialized
[ 3.036804] oprofile: using NMI timer interrupt.
[ 3.068527] xt_time: kernel timezone is -0000
[ 3.099902] Initializing XFRM netlink socket
[ 3.128733] NET: Registered protocol family 10
[ 3.158413] Segment Routing with IPv6
[ 3.189871] mip6: Mobile IPv6
[ 3.218677] sit: IPv6, IPv4 and MPLS over IPv4 tunneling driver
[ 3.246661] usb 1-1: New USB device found, idVendor=80ee, idProduct=0021, bcdDevice= 1.00
[ 3.276801] NET: Registered protocol family 17
[ 3.309267] usb 1-1: New USB device strings: Mfr=1, Product=3, SerialNumber=0
[ 3.338231] NET: Registered protocol family 15
[ 3.369165] usb 1-1: Product: USB Tablet
[ 3.395713] NET: Registered protocol family 35
[ 3.424022] usb 1-1: Manufacturer: VirtualBox
[ 3.452038] mce: Using 0 MCE banks
[ 3.483762] sched_clock: Marking stable (3471301990, 12097072)->(3583978351, -100579289)
```



4. When installation process is finished, press Enter to reboot.



5. Reboot and after boot into Android OS, it will show desktop screen.

