

FAQ / Application Note

Subject : How to flash BIOS with UEFI mode

FAQ Document No: S16004

Date: 2016/2/15

Model Name. EBM-SKLU

Rev. A1

Category: ☐ General ☐ H/W ☒ S/W ☐ Others, 寫小分類

Purpose:

SkyLake and further products will set UEFI as BIOS default, and the BIOS will not include EFI shell. As the result, this document will guide the customer how to add the EFI shell and flash the BIOS with UEFI mode.

1. Download the BIOS file from Avalue official website, and extract the BIOS file to your Windows desktop.

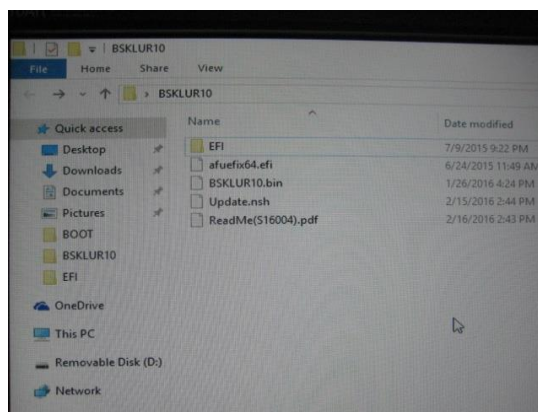


2. Ensure the BIOS file should contain the files as follow:

EFI folder 【1.Bootx64.efi 2. Shellx64.efi 3.Shell.efi】

BIOS batch file 【1. afuefix64.efi; 2. Update.nsh, 3. XXXXX.BIN (BSKLUR.BIN, for example)】

A guideline for flashing BIOS under UEFI mode 【S16004 How to flash BIOS with UEFI mode.pdf】



Avalue Technology Inc.

www.avalue.com.tw
sales@avalue.com.tw
Tel: +886-2-82262345
Fax: +886-2-82262777

Avalue Europe
sales.europe@avalue.com.tw
Tel: +45-7025-0310
Fax: +45-4975-5026

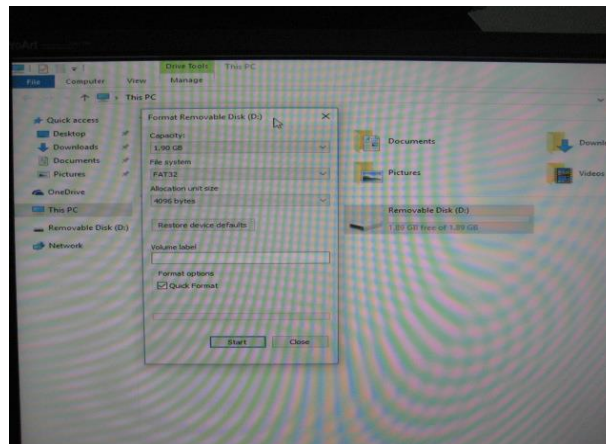
Avalue USA
sales@avalue-usa.com
Tel: +1-732-578-0200
Fax: +1-732-578-0250

BCM Advanced Research
BCMSales@bcmcom.com
Tel: +1-949-470-1888
Fax: +1-949-470-0971

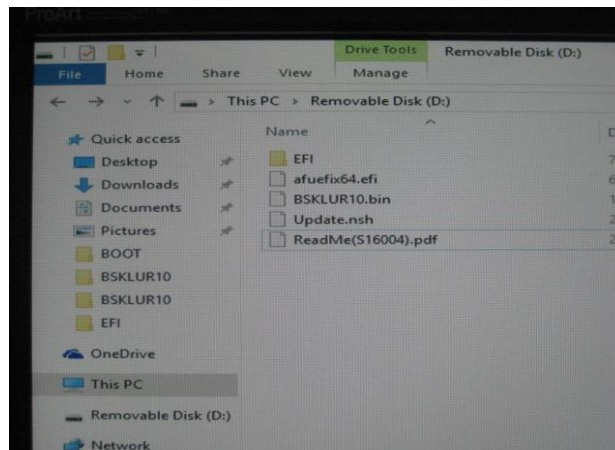
Avalue China
sales.china@avalue.com.cn
Tel: +86-21-5426-3399
Fax: +86-21-6495-0370

7F, 228, Lian-Cheng Road, Chung Ho City, Taipei, Taiwan R.O.C.

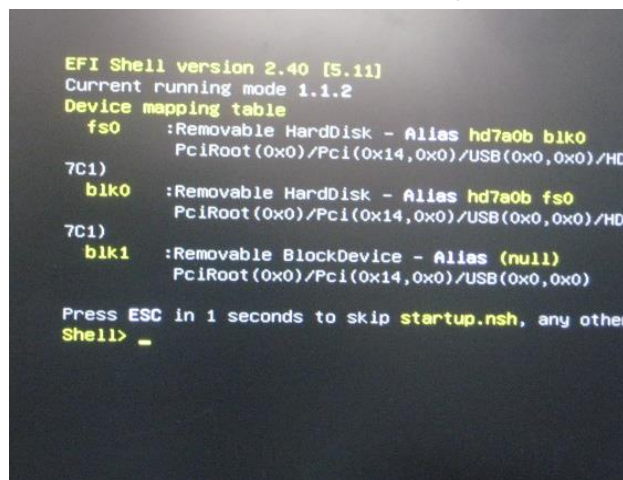
3. Please format your USB Pen driver as FAT32 type.



4. Copy all the files of the BIOS into your USB pen driver.



5. Plug the USB pen driver to the board with which you want to flash, and remove all the other bootable devices such as HDD or DVD. Turn on the board, and the board will boot up with EFI shell.



6. Please type in “fs0:” for entering your USB pen driver which has now plugged into the board.

```

EFI Shell version 2.40 [5.11]
Current running mode 1.1.2
Device mapping table
fs0 :Removable HardDisk - Alias hd7d0b blk0
      PciRoot(0x0)/Pci(0x14,0x0)/USB(0x3,0x0)/HD(1,MBR,0x05E37750,0
BFC1)
blk0 :Removable HardDisk - Alias hd7d0b fs0
      PciRoot(0x0)/Pci(0x14,0x0)/USB(0x3,0x0)/HD(1,MBR,0x05E37750,0
BFC1)
blk1 :Removable BlockDevice - Alias (null)
      PciRoot(0x0)/Pci(0x14,0x0)/USB(0x3,0x0)

Press ESC in 1 seconds to skip startup.nsh, any other key to continue.
Shell> fs0:_
  
```

7. For executing the autoexec file, please key in update to flash the BIOS automatically, and it takes a few seconds for the BIOS to complete the BIOS update procedure.

```

fs0:\> update.nsh
update.nsh> Afulfix64.efi BSKLUR10.bin /P /B /N /X

-----
|          AMI Firmware Update Utility v5.08.00
|      Copyright (C)2015 American Megatrends Inc. All Rights Reserved
|-----
Reading flash ..... done
- ME Data Size checking . ok
- FFS checksums ..... ok
Erasing Boot Block ..... done
Updating Boot Block ..... done
Verifying Boot Block ..... done
Erasing Main Block ..... done
Updating Main Block ..... done
Verifying Main Block ..... done
Erasing NVRAM Block ..... done
Updating NVRAM Block ..... done
Verifying NVRAM Block ..... done

fs0:\> _
  
```

9. Please turn off the power, and then power on again to check if the new BIOS has been flashed successfully.

```

Aptio Setup Utility - Copyright (C) 2016 American Megatrends
Main Advanced Chipset Security Boot Save & Exit

BIOS Information
BIOS Vendor      American Megatrends
Core Version     5.11
Compliance      UEFI 2.4; PI 1.3
Project Version  1ASDI 0.30 x64
Build Date and Time 01/26/2016 17:19:30
Access Level     Administrator
EC 8528 Firmware 05
BIOS Name        BSKLUR10

System Language  [English]
Platform Information
System Date      [Tue 02/16/2016]
System Time      [15:30:55]
  
```